

RI Coastal Resources Management Council

Regulatory Program and Restoration Partnerships

RI Rivers Council

May 11, 2016





Programmatic Goals

It shall be the policy of the state to preserve, protect, develop, and where possible, restore the **coastal resources** of the state...

...Preservation and restoration of **ecological systems** shall be the guiding principle upon which decisions are made.

What we do

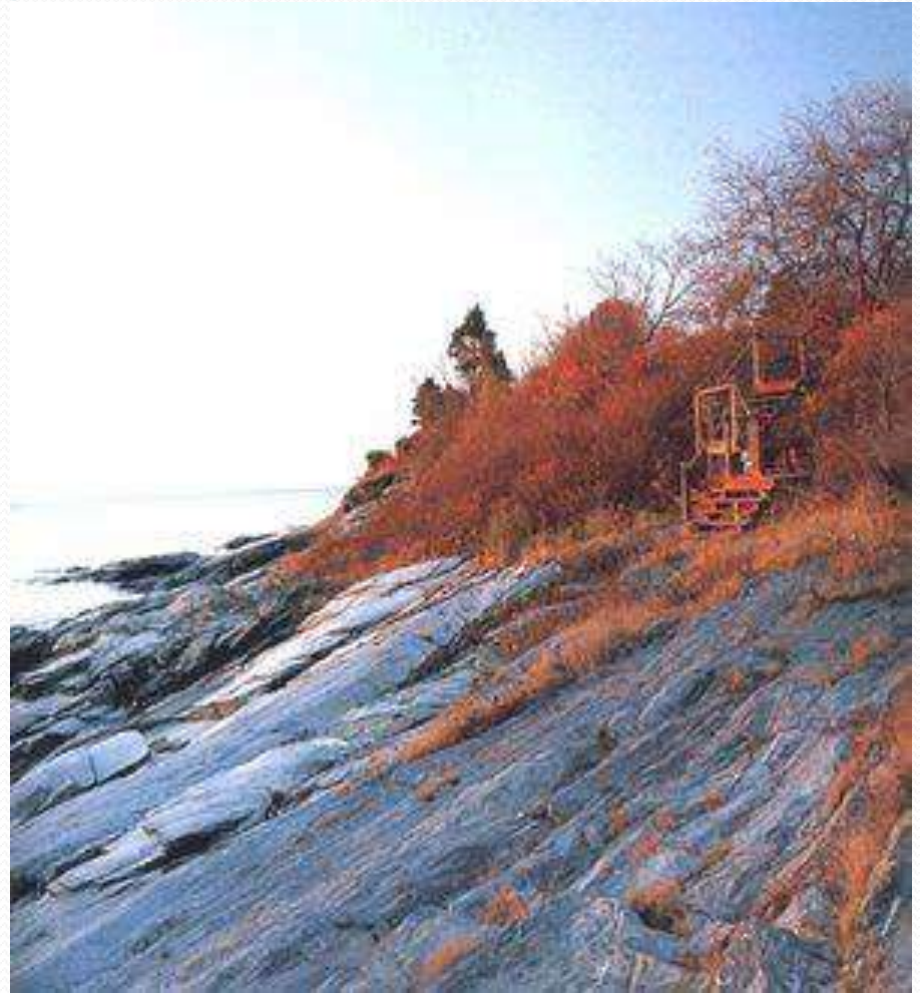
- Coastal development
- Climate change / sea level rise planning
- Dredging activities
- Aquaculture
- Shoreline public access
- Habitat restoration
- Marine aquatic invasive species
- Coastal hazards
- Rules and regulations (RICRMP and SAMPs)
- Policy and planning
- Outreach and education
- Local, state, regional and federal partnerships

Organization

- Appointed Council
 - Standing Committees
 - Policy and Procedure
 - Rights of Way
 - Ocean SAMP
 - Shoreline Change SAMP
 - Urban Ports and Harbors
- Executive and Deputy Directors
- Permit and Policy Staff
- Enforcement

CRMC Jurisdiction

- Tidal waters
- Shoreline Features
- Areas contiguous to shoreline features
 - 200ft. from inland edge

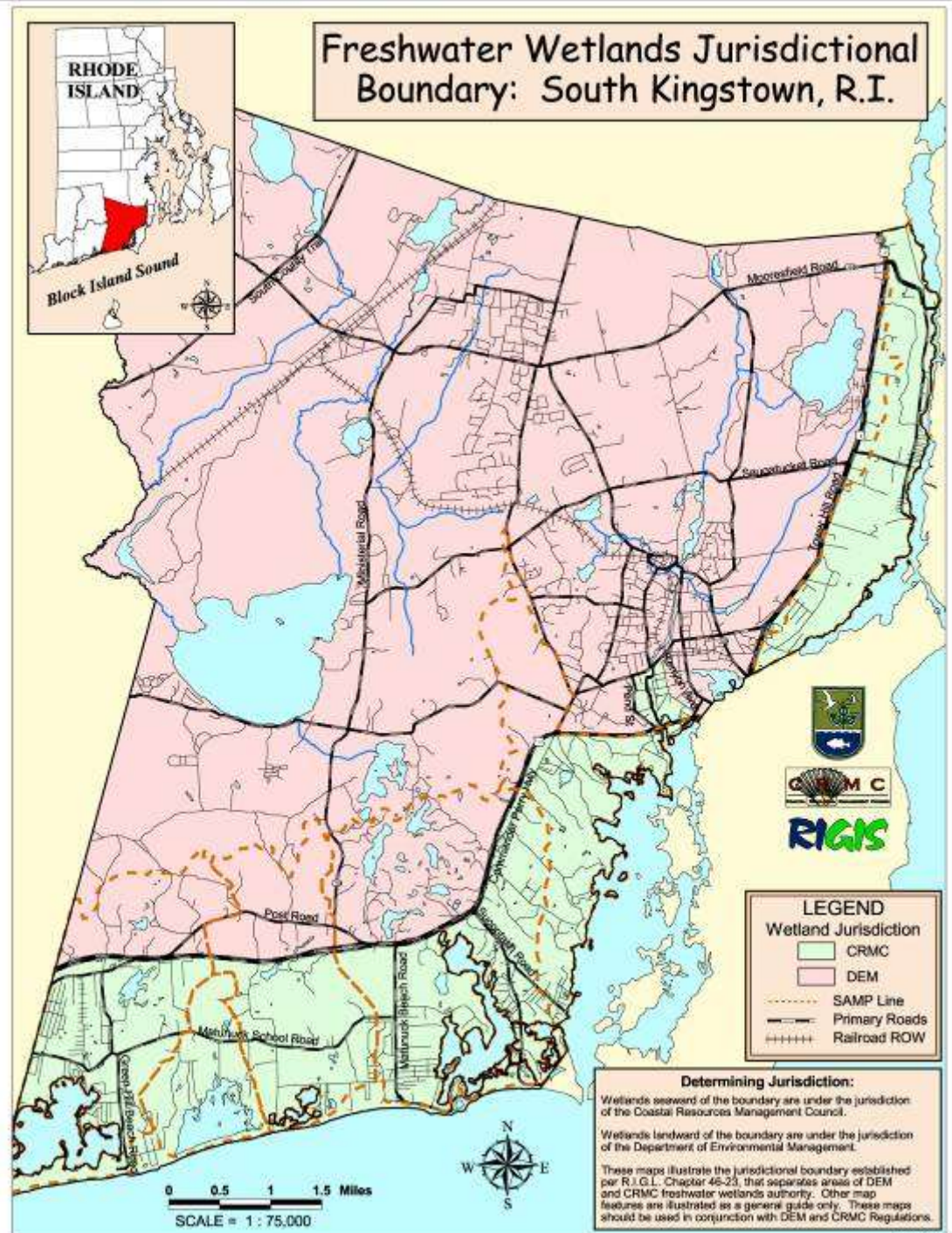


Coastal Features

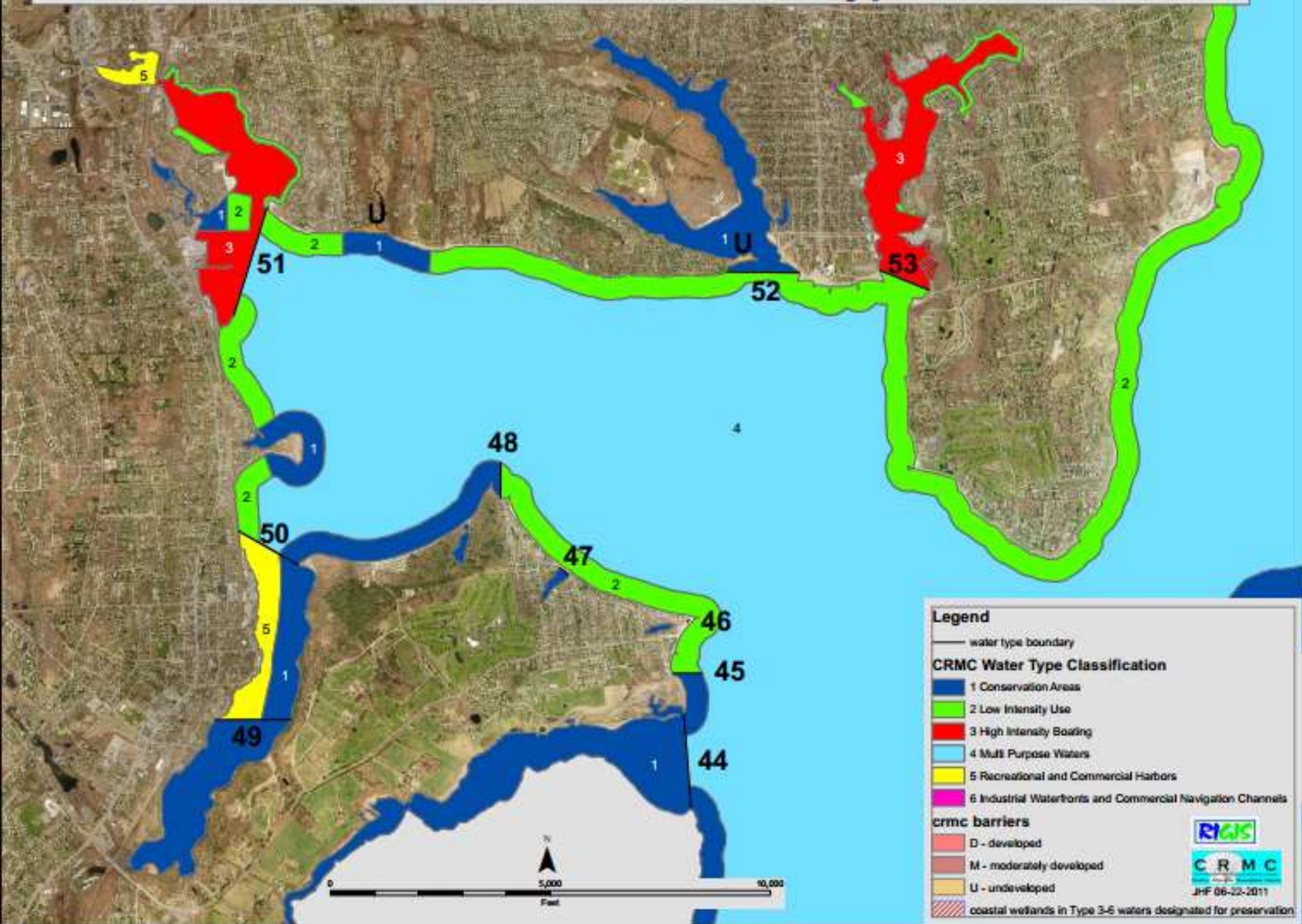
- Tidal and Coastal Pond Waters (§ 200)
- Beaches (§ 210.1)
- Barriers and Spits (§ 210.2)
- Coastal Wetlands (§ 210.3)
- Headlands, Bluffs, and Cliffs (§ 210.4)
- Rocky Shores (§ 210.5)
- Manmade Shorelines (§ 210.6)
- Dunes (§ 210.7)



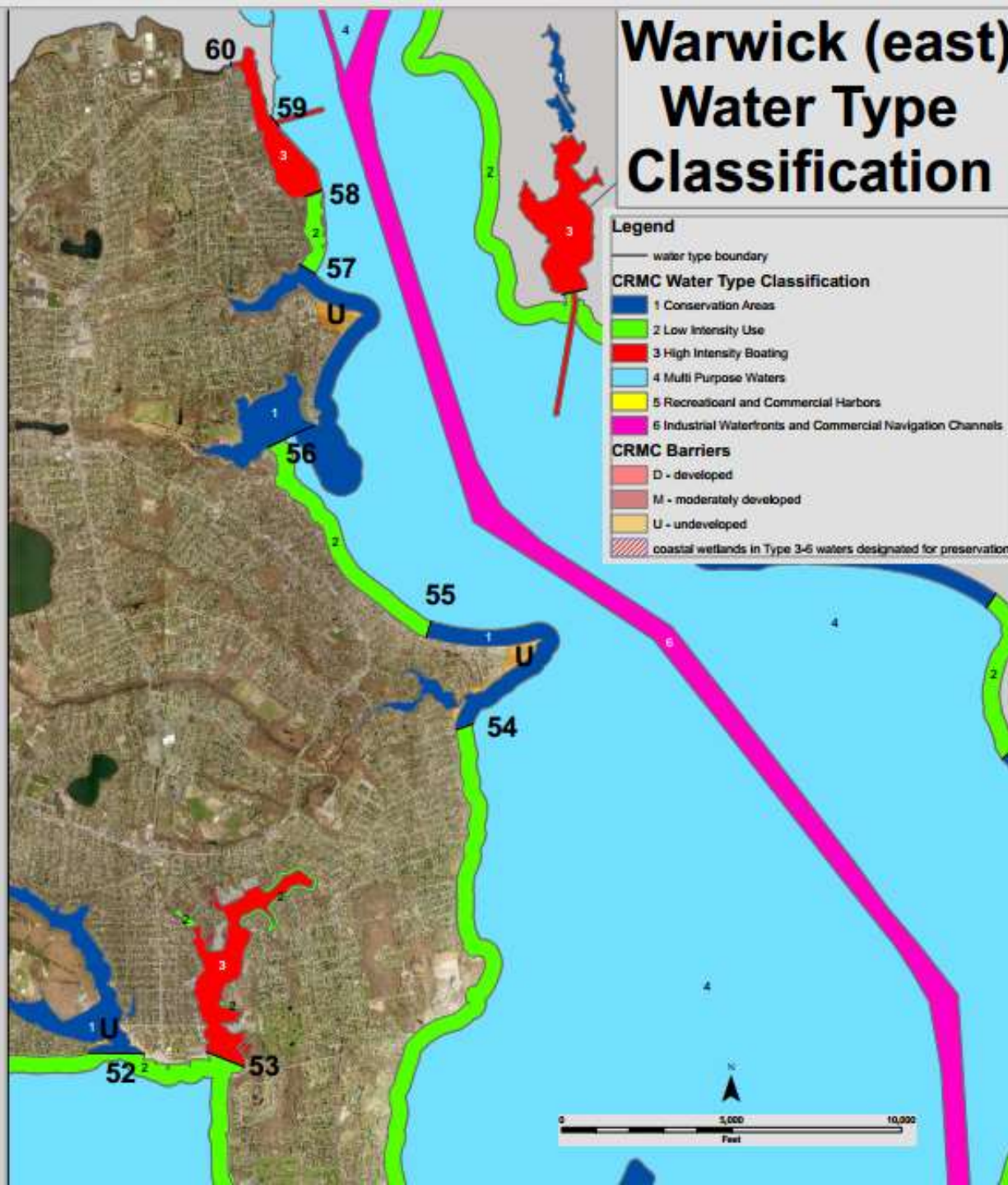
Freshwater Wetlands in the Vicinity of the Coast



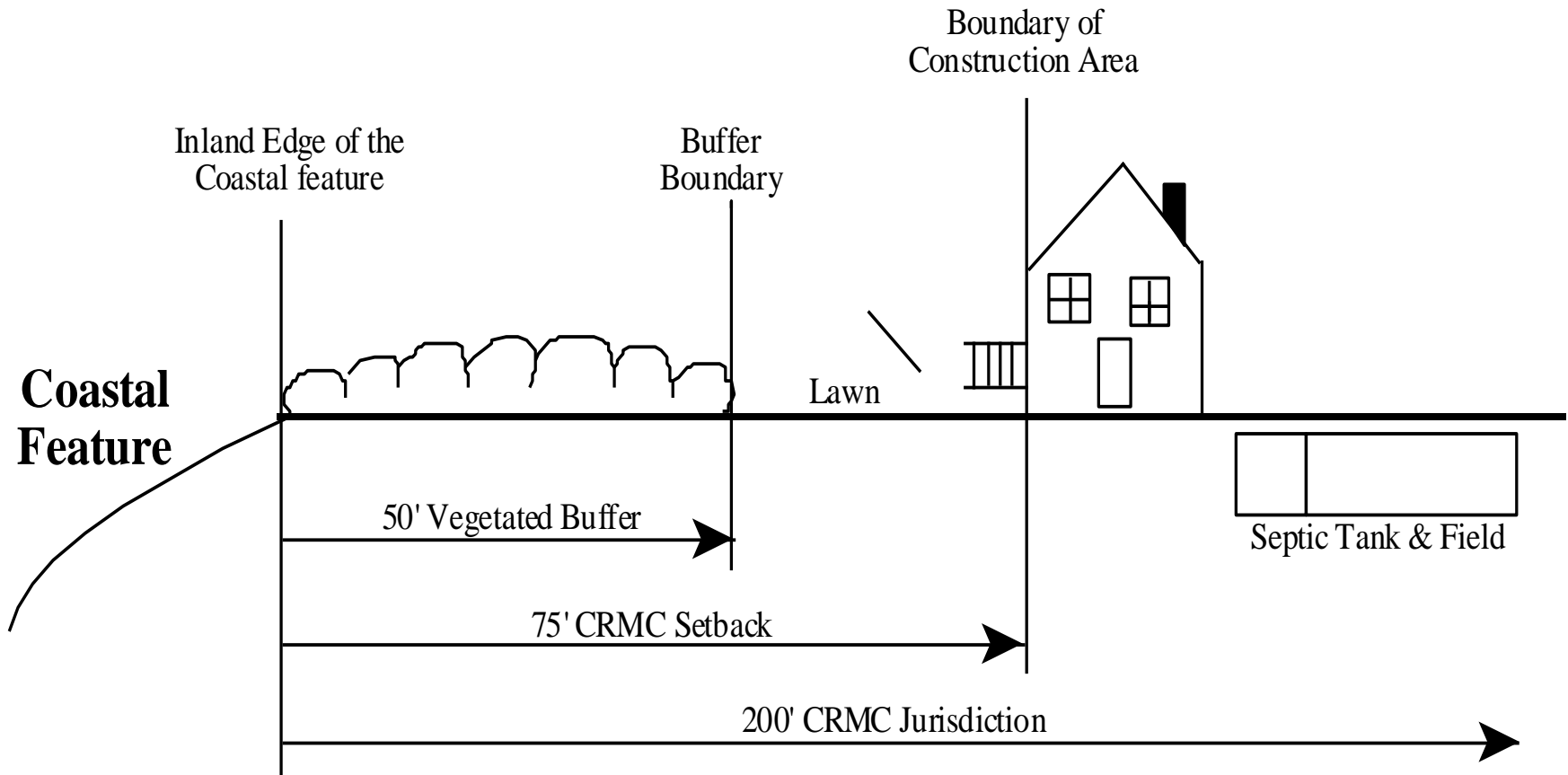
Warwick and East Greenwich Water Type Classification



Warwick (east) Water Type Classification



CRMP Section 150: Coastal Buffers



SAMP Watersheds



Shoreline Change SAMP

[About](#) [Project Partners](#) [Contact Us](#)

RI CRMC Shoreline Change Special Area Management Plan



www.beachsamp.org

Check out what was discussed at the last Beach SAMP Stakeholder Meeting!

If you missed the last stakeholder meeting, catch up on what was discussed here!

[Read more »](#)

News & Updates



Upcoming King Tide Event: Snap the Shore, See the Future



Dr. Michael Oppenheimer to speak at Beach SAMP Meeting, May 3rd at 6:00pm

Recent Posts

- Upcoming King Tide Event: Snap the Shore, See the Future May 4, 2016
- Dr. Michael Oppenheimer to speak at Beach SAMP Meeting, May 3rd at 6:00pm April 22, 2016
- TOURING HISTORIC STORMS IN RHODE ISLAND: A Map Journal April 12, 2016
- Join us Tuesday, May 3 for RI Shoreline Change Special Area Management Plan Stakeholder Meeting March 17, 2016
- Beach SAMP~ Year in Review ~2015 March 15, 2016
- Keeping History Above Water: April 10-13, 2016, Newport, RI March 11, 2016
- Student plan envisions "green area" at Oakland Beach seawall area February 25, 2016

STORMTOOLS



Web-based tool to examine the impact of storm surge & sea level rise.

[View the tool.](#)

Sea Level Affecting Marsh Migration (SLAMM)



Statewide maps illustrating how salt marshes may migrate as sea level changes.

[View the maps here.](#)

[View the final report here.](#)

Shoreline Change Maps



Statewide maps illustrating coastal erosion.

[View the maps.](#)

Coastal and Estuarine Habitat Restoration Trust Fund

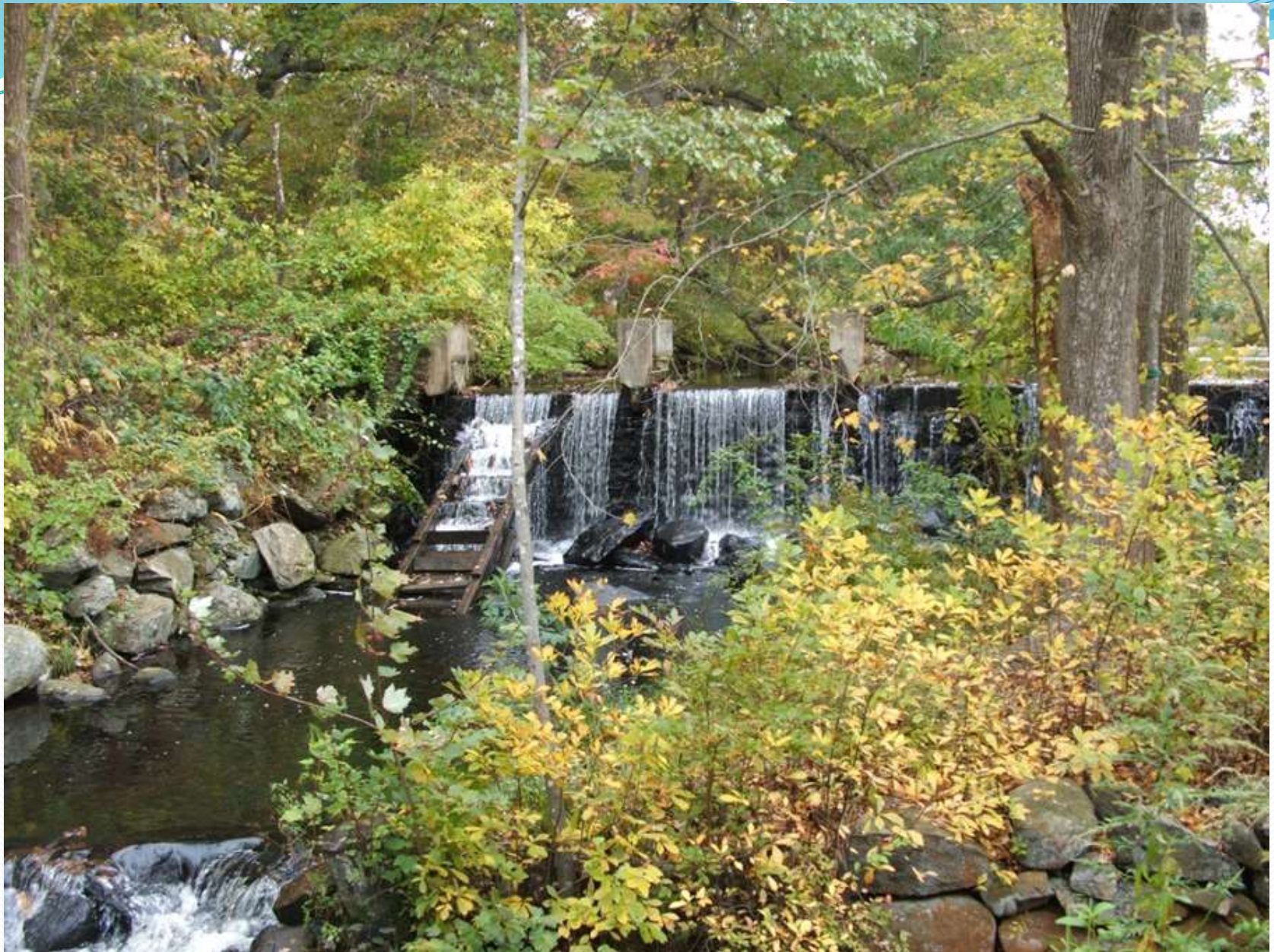
- \$225,000 state funding allocated annually
- Priority habitats: salt marsh, seagrass beds, riverine systems, shellfish beds
- Feasibility study to construction
- Over \$1.6M awarded for fish passage projects on eleven riverine systems



Pawtuxet Falls (Lead Organizations: NBEP and Pawtuxet River Authority; Photo by USDA-NRCS)



Rising Sun Mill (Lead Organization: Woonasquatucket River Watershed Council; Photo by Save The Bay)



Shady Lea Mill (Photo by Save The Bay)

Federal Funding

- 2009 NOAA stimulus funding (\$3.5M)
 - Sub-Recipient: Wood Pawcatuck Watershed Association
 - Completed 3 fish passage projects on upper Pawcatuck
 - Sub-Recipient: RIDEM
 - Partially funded 3 fish passage projects on Ten Mile River
- DOI Hurricane Sandy Coastal Resiliency Funding (\$3.25M)
 - Partners: Charlestown, Westerly and Salt Ponds Coalition
 - Salt marsh restoration in Ninigret, Quonochontaug and Winnapaug Ponds



Kenyon Mill dam (Photo by WPWA)



PHOTO BY AYLA FOX

Ninigret Pond

Habitat Restoration Planning

- RI Salt Marsh Assessment
- Long-term salt marsh monitoring
- SLAMM mapping
- Climate Change Vulnerability Assessment (NBNERR)
- RIDEM Anadromous Fish Plan

Thanks!

- Caitlin Chaffee
cchaffee@crmc.ri.gov
- Jeff Willis
jwillis@crmc.ri.gov

www.crmc.ri.gov